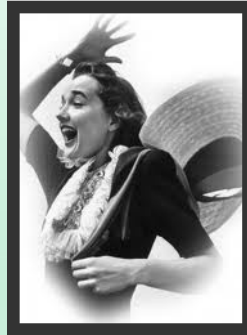


CMSNE's 2012 Social Initiative

Is to help support and feed the hungry and homeless.

Please help and support our project bring a non-perishable healthy food item to the conference.

Case Management Society of New England's 13th Annual Building Strategies for Success Conference



*Hold onto your hats!
Are you prepared for the whirlwind changes in 2012?*

Wednesday, March 14, 2012
The Lantana
Randolph, MA
8:00 AM - 4:15 PM

Sponsored By:

American Homecare Federation
Boston Home Infusion
Boston Sports & Shoulder Center
Braintree & New England Rehab Hospitals
Crotched Mountain
Fairlawn Rehabilitation Hospital
Genzyme
Golden Living Centers
Hebrew SeniorLife
Home Instead Senior Care
Kindred Hospitals of Massachusetts
Lakeview Neurorehabilitation Center
Medical Resources Home Health Corp.
Mom's Meals
New England Home Therapies/Infusion Solutions
Northeast Clinical Services
Shire
SolAmor Hospice
Spaulding Rehab Network/Partners Healthcare at Home
Stops/Fast Track

About CMSNE

The Case Management Society of New England is a not-for-profit association dedicated to the support and development of the profession of Case Management through education, networking and membership.

Mission Statement

The mission of the Case Management Society of New England is to promote the growth and value of the practice of case management and to support the evolving needs of the case management professional.

To be the leading regional case management organization, CMSNE remains committed to professional excellence. We value :

- Education through continuous learning
- Advocacy for the practice of case management
- Professional development within a supportive environment
- The role of CMSNE in the development of the professional image of case management
- Use of technology in advancing our organizational agenda as well as our jobs
- Awareness of health policy issues affecting our clients and ourselves
- Opportunities to network for the purpose of collaboration and communication
- Our clients, without whom we would not exist

Conference Planning Committee

- Janet Hill-Heavey, RN, BSN, CCM - Harvard Vanguard Medical Associates, Needham, MA
- Stacey Hodgman, MS, RN-BC, CPUM, IQCI - Kindred Healthcare - Conference Co-Chair
- Janelle Leavitt, RN, CCM - Liberty Mutual Insurance, Bedford, NH
- Cathy Lodico, RN, MS, CCM - Liberty Mutual Insurance, Bedford, NH - Conference Co-Chair
- Nancy Perreault, RN, CCM - South Shore Medical Center, Norwell, MA

Special thanks and appreciation to conference sponsors, their unrestricted educational grants have allowed CMSNE the opportunity to bring a quality educational program to our membership. Acceptance of support from these sponsors in no way implies endorsement of their products and/or services by CMSNE or the program's accreditation agencies.

Conference Information

Intended Audience

Case Managers across the continuum of care, Discharge Planners, Continuing Care Nurses, Social Workers, Disability Managers, Rehabilitation Nurses, Counselors and Insurance Specialists.

Continuing Education

This activity will be submitted to the American Association of Occupational Health Nurses (AAOHN), which is an accredited approver by the American Nurses Credentialing Center's Commission on Accreditation for 5.5 contact hours. Applications have also been submitted for pre-approval for 5.5 contact hours for CCM and SW through Boston University School of Social Work and the CCM Commission.

Overall Purpose

How many hats do you wear daily in your personal and professional lives? At home; are you a partner, parent, child/caretaker of a family member? At work; are you a counselor, coordinator, mediator, coach, negotiator, boss? How many hats? Do you - can you - keep a firm grasp on them all in the whirlwind of changes happening each day, not only in healthcare, but in the world in general? The purpose of this conference will be to enlighten us on issues related to topics that we face daily. We will discuss communication in a multigenerational world; do we meet or tweet? We will explore the Medicare system, gain a basic understanding of its' function and learn what new regulations lie ahead in 2012; do we know what an ACO is and how it will impact our Case Management practice? The program will introduce Case Managers to the importance of coaching skills, not only for our clients but for those with whom we live and work. Lastly, we will discover more about the connection between life and work balance, when we explore from Boardroom to Bedroom- a captivating session on how the condition of your bedroom can be a reflection on your work performance. So come join us for a day of education and enlightenment, we promise that you will learn techniques to keep your hats in place even in the most turbulent of storms.

Conference Objectives

Upon completion of the conference attendees will be able to:

- Recognize the importance of adapting to transforming communications in a multigenerational world.
- Gain an understanding of the changes in current Medicare regulations to enhance your personal and professional knowledge.
- Develop and enhance your coaching skills to further facilitate the growth of others.
- Recognize the importance of life/work balance and its effect on your personal well-being.

Dated Material - Please share with interested colleagues

CMSNE

CASE MANAGEMENT SOCIETY OF NEW ENGLAND
2 NASHUA RD., PELHAM, NH 03076

About the Program Speakers

Paula Brysson Johnson, BSN, MPA, DA, RN received her Bachelor's in Nursing from UMass Amherst, her Master's in Public Administration from Suffolk University and her Doctorate in Leadership from Franklin Pierce University. Her dissertation focused on the role of community governance and the impact on social determinants of health and the necessity of transformational leaders as key to the success of this governance model. In her role as Magnet Coordinator at Dartmouth-Hitchcock Medical Center, she successfully led the organization to its second Magnet designation in June 2009 and is preparing for redesignation in 2013. As part of this role, Paula routinely works within the shared governance council structure in developing goals and action plans related to Magnet readiness. She routinely presents to nursing staff at all levels on topics including transformational leadership, peer review, quality improvement and professional development.

Maureen Kerrigan coordinates partnership and outreach for the Division of Medicare Health Plans operations at the Centers for Medicare and Medicaid Services Boston office, serving the 6 New England states. In that position, she coordinates not only an annual 2.5 day intensive training, but also provides trainings and presentations to organizations or beneficiaries throughout New England. She has more than 20 years experience in government health care, including several years in Washington, DC, where she worked as an attorney with the US Department of Health and Human Services, as staff on the US Senate Labor and Human Resources Committee and as director of government relations for national health care associations.

Karen Scibinico is a leadership and career coach in a business called Emerge that focuses on strategies to energize your career, seminars to enhance your leadership skills, and services to strengthen your team. Karen has served in leadership positions in higher education, business, public education and various professional organizations. As a dean and director of the Center for Executive and Professional Education at Bentley University, she led a team of people delivering professional development programs both on campus and at corporate locations. Recently, she returned to Bentley University as a faculty member, teaching team effectiveness and management consulting skills to MBA students. Regardless of whether she is coaching individuals or presenting group seminars, Karen motivates others to strengthen their skills and reach their goals.

Lauran Star is one of the leading experts in the field of Women's Empowerment and Leadership. A sought after consultant and speaker for organizational development she inspires vision and change in any economic environment. She takes Women's Empowerment from the boardroom to the bedroom, in a light humored yet serious look at life balance. She combines her true passion for authentic dynamic content with her unique brand of humor for a fresh approach that brings issues and solutions to light.

Program Schedule

8:00 - 8:45 AM
Registration, Continental Breakfast & Exhibit Time

8:45 - 9:00 AM
Welcome/Introduction
Cathy Lodico, RN, MS, CCM
Conference Co-Chair
Susan Madden, RN, BSN, CCM
CMSNE President

9:00 - 10:15 AM Session I
Meet or Tweet:
Multi-Generational Communication
Paula Brysson Johnson, BSN, MPA, DA, RN

10:15 - 10:45 AM
Morning Break & Exhibit Time

10:45 AM - 12:15 PM Session II
Medicare 101
Maureen Kerrigan, JD

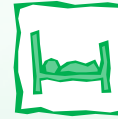
12:15 - 1:15 PM
Luncheon & Exhibit Time

1:15 - 2:30 PM Session III
Enhancing Your Coaching Skills:
Grow People and Transform Yourself
Karen Scibinico, MEd

2:30 - 2:45 PM
Afternoon Break

2:45 - 4:15 PM Session IV
From Boardroom to Bedroom.....
Lauran Star

4:15 PM
Closing Remarks &
Certificate of Completion Distribution
Stacey Hodgman, MS, RN-BC, CPUM, IQCI
Conference Co-Chair



Hotel Information

Comfort Inn Randolph
1374 North Main St., Randolph, MA 02368
Phone: 781-961-1000

A block of rooms has been set aside at the Comfort Inn Randolph for the evening of 3/13/12. The room rate is \$95, plus tax. This room block will be available until 2/28/12, space is limited make your reservations early. When making a reservation refer to code **Case Management Society of New England**.

Conference Site Information

The Lantana
43 Scanlon Dr., Randolph, MA 02368
Telephone: 781-961-4660
Website: www.thelantana.com

The Lantana is located on Boston's South Shore, and is convenient to all major highways making it an easy commute to the conference site from most locations. The Lantana conference center is handicap accessible.

Detailed travel directions will be provided with conference confirmation or you can visit:
www.thelantana.com/directions.htm

Join CMSNE and Save
Join CMSA/CMSNE and receive the member rate if you send in your membership application and fee along with your conference registration. Download a membership application on CMSA website www.cmsa.org

Registration Fee Schedule

CMSNE Member Rate: \$80
CMSA Member Rate: \$100
Non-Member Rate: \$120

Registration Fee includes continental breakfast, breaks, plated lunch, CE program & conference syllabus.

Registrations must be postmarked by 2/28/12 or an additional \$15 late fee will be assessed.

CMSNE Federal Tax ID# 04-3159207

For additional information contact
CMSNE

2 Nashua Rd., Pelham, NH 03076
Phone : 603-329-7481 Fax: 888-314-7375
Email: CMSNE@comcast.net Website: www.CMSNE.org

13th Annual Building Strategies For Success Conference
Hold onto your hats! Are you prepared for the whirlwind changes in 2012?
Registration Form

Name _____ Daytime phone _____
Employer _____

Address _____ Zip Code _____
City, State _____

Please provide fax and/or email to receive confirmation of registration and directions.

Registration Fees: \$80 CMSNE Member \$100 CMSA Member \$120 Non Member (includes breakfast, lunch, course materials and RN, CCM & SW credits)
For registrations and payments postmarked after the 2/28/12 deadline please include a \$15 late fee.

Check here if vegetarian or special dietary restrictions.

Credit Card Payment Information: Type: (V, MC, AMX) _____ Card #: _____ Exp. Date: _____

Name as it appears on the Card: _____ Total Amt. to be Charged: _____

Billing address as it appears on the credit card statement (if different from above): _____

Address: _____

City: _____ State: _____ Zip Code: _____